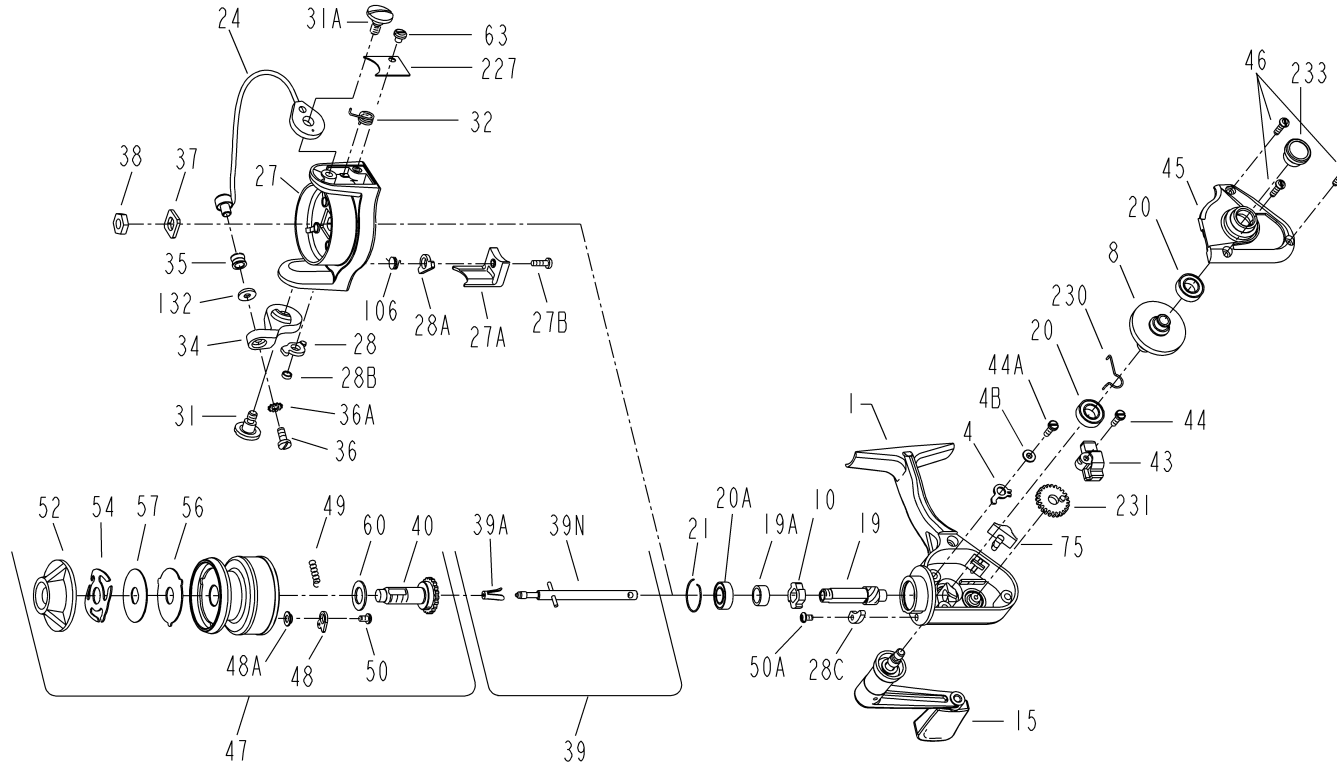




PARTS LIST FOR MODEL 4200SS



<u>KEY NO.</u>	<u>PART NO.</u>	<u>DESCRIPTION</u>
1	001 4200	Housing
4	004 4200	Dog
4B	004B4200	Dog Lever Bushing
8	008 4200	Main Gear Assembly
10	010 4200	Ratchet
15	015N4200	Handle (Complete)
19	019 4200	Pinion
19A	019A4200	Pinion Spacer
20	020 4200	Ball Bearing (Main Gear) (2 req.)
20A	055 4200	Ball Bearing (Pinion)
21	021 4200	Bearing Lock Ring
24	024 4200	Bail Wire Assembly
27	027 4200	Rotor Cup
27A	027A4200	Bail Trip Cover
27B	046A4300	Bail Trip Cover Screw
28	028 420	Trip Lever
28A	028A440	Cam Lever
28B	028B4200	Trip Lever Bushing
28C	028C4200	Trip Cam
31	031 420	Bail Arm Screw
31A	031A420	Bail Cam Screw
32	032 420	Bail Spring
34	034 420	Bail Arm
35	035 420	Line Roller
36	036 750	Bail Stud Screw
36A	036A750	Lock Washer
37	037 420	Rotor Cup Washer
38	038 720	Rotor Cup Nut
39	039N4200	Spool Shaft Complete
39A	039A4300	Spool Retainer
39N	039N4200B	Spool Shaft with Pin
40	040 4200	Spool Sleeve Complete
43	043 4200	Crosswind Block
44	044 4200	Crosswind Block Screw
44A	046A4300	Dog Screw
45	045 4200	Housing Cover
46	046 4300	Housing Cover Screw (3 req.)
47	047 4200	Spool (Complete)
48	048N4300	Click Tongue
48A	048A4300	Click Tongue Washer
49	049 4300	Click Spring
50	063A2.5FR	Click Spring Screw
50A	046A4300	Trip Cam Screw
52	052 716	Drag Knob
54	054 4200	Drag Spring
56	056 4200	Drag Washer HT100
57	057 4200	Drag Washer Metal
60	060 716	Spool Sleeve Washer
63	063 500S	Bail Spring Cover Screw
75	075 4300	Eccentric Button
106	106 5500	Cam Lever Spring
132	132 420	Roller Washer
227	227 4300	Bail Spring Cover
230	230 4200	Friction Dog Spring
231	231 4200	Crosswind Gear
233	233 4200	Bearing Cover