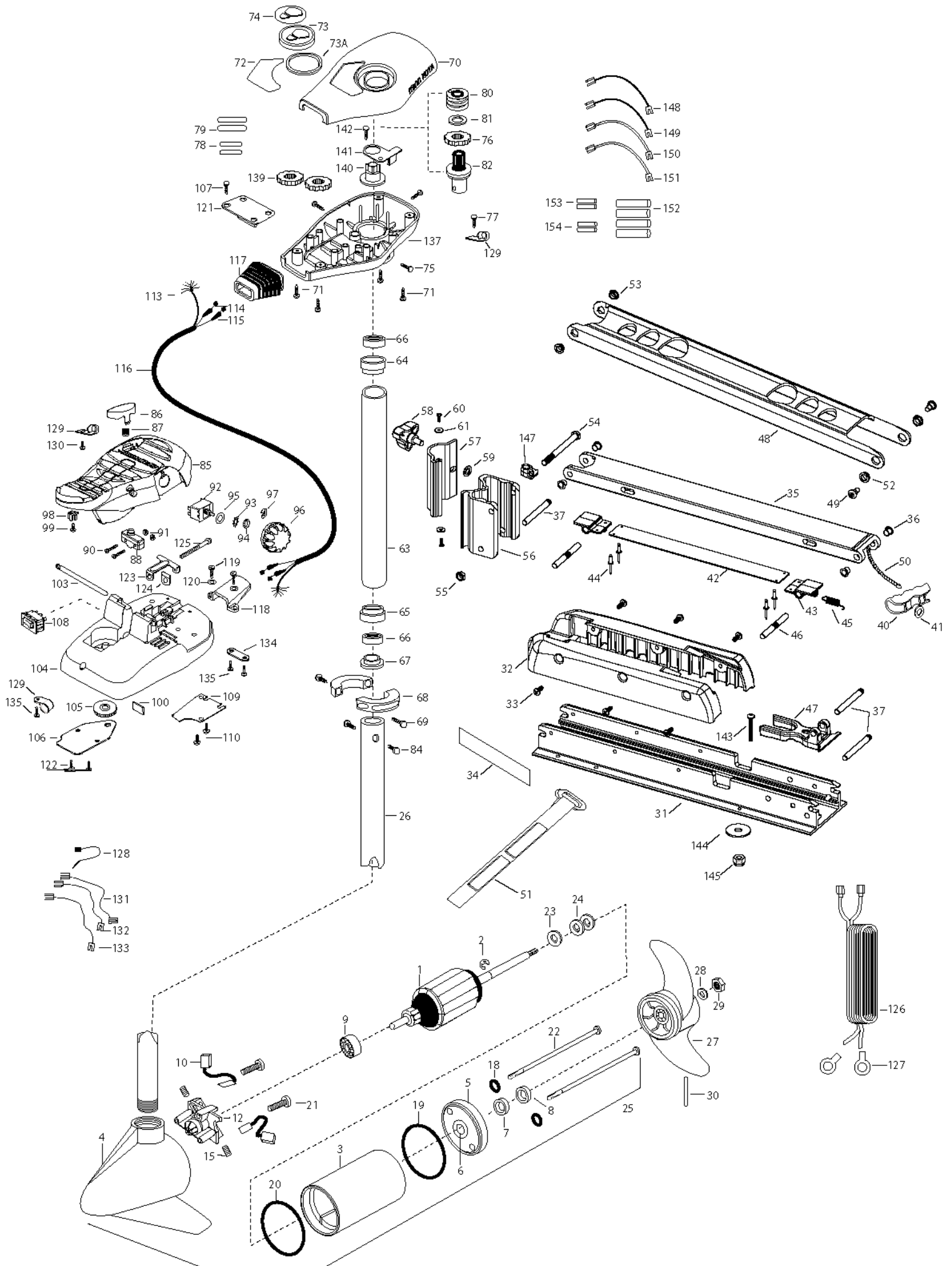


EDGE 45
45 LBS THRUST
12 VOLT 42 AMPS
45"/52" SHAFT

for use with "J" serial numbers
2-year warranty from the date of sale

For Parts and Service
Call 1-888-404-1119
www.mikesreelrepair.com



1	2-100-116	ARM ASSEMBLY 12V 3.625	51	2263805	VELCRO STRAP
2	788-015	RETAINING RING	52	2267302	BUSHING-LOWER 7/16" ID, SS
3	2-200-101	HOUSING ASSEMBLY CENTER 3.625 TXT	53	2267303	BUSHING-UPPER 3/8" ID, SS
4	2-300-195	HOUSING-ASSEMBLY BRUSH END 3.625 SP.CO	54	2263505	BOLT 3/8-16 X 4.25"
5	2-400-101	PLAIN END HOUSING ASSEMBLY	55	2263114	NUT-NYLOCK JAM 3/8-16
6	144-049	BEARING- FLANGE [SERVICE ONLY]	56	2261872	HINGE BASE, FW
7	880-003	SEAL	57	2261877	HINGE DOOR, FW
8	880-006	SEAL WITH SHIELD	58	2260905	HANDLE-SOFT GRIP, L&D
9	140-010	BEARING -BALL	59	2261728	WASHER-RETAINING 3/8"
10	188-036	BRUSH ASSEMBLY [2.EA]	60	2053415	SCREW #8-32 X 3/8" TRI [2 EA.]
12	738-036	BRUSH PLATE W/HOLDER 3.25	61	2261732	WASHER #8, NYLON [2 EA.]
15	975-040	SPRING- TORSION [2.EA]	■	2992012	TUBE W/BEARING RACE ASSEMBLY 21"
18	701-008	O-RING [2. EA]		2992016	TUBE W/BEARING RACE ASSEMBLY 24"
19	337-036	GASKET	63	2272069	TUBE OUTER-21" 4 HOLES
20	701-081	O-RING		2272067	TUBE OUTER -24" 4 HOLES
21	830-007	SCREW- SELF-THREAD 8-32X1.7 [2.EA]	64	2266260	BEARING RACE
22	830-042	THRU BOLT 8-32 X 8.83 [2.EA]	65	2266220	BEARING RACE-STEEL
23	990-067	WASHER- STEEL THRUST	66	2266000	BEARING BALL-STEEL [2.EA]
24	990-070	WASHER- NYLATRON [2.EA]	67	2266115	BEARING CONE
25	2097062	MTR ASSEMBLY 12V 3.625 5SPD	68	2261622	COLLAR HALF-ALUMINUM- [2.EA]
26	2032061	TUBE (COMP)W/CSK HOLE 45"	69	2263453	SCREW-1/4X20 X 1" SHCS SS [2. A]
	2032067	TUBE (COMP)W/CSK HOLE 52"	70	2260286	COVER-CTR BOX EDGE/FC BLK
■	1378131	PROPELLER KIT	71	2372100	SCREW-8-18 X 5/8 THD [4.EA]
27	2091160	PROPELLER W/WEDGE 2	72	2265672	DECAL-COVER EDGE 45/FC
28	2151726	WASHER- 5/16 SS	73	2260150	POINTER DISC TRNSLCNT RED
29	2053101	NUT-PROP NYLOC	73A	2261733	WASHER-FOAM, INDICATOR
30	2092600	PIN-DRIVE SS	74	2265800	DECAL-INDICATOR
31	2266507	BOWPLATE, FW, LONG, 52"	75	2053414	SCREW-8-32 X 1/2 TRI LOBE [3. EA]
	2266502	BOWPLATE, FW, STD, 45"	76	2267800	GEAR-INDICATOR
32	2263905	MOTOR REST, BLK.	77	2372100	SCREW-8-18 X 5/8 SS
33	2303430	SCREW 1/4-20 X 5/8 [6 EA.]	78	2375400	SHRINK TUBE-1/4OD X 1-3/4 [2. EA]
34	2265667	MOTOR REST DECAL, FW [2 EA.]	79	2355410	SHRINK TUBE-3/8 OD X 2 [2. EA]
■	2991702	BOWMOUNT FW ASSEMBLY, LONG	80	2232360	PULLEY-CABLE DRUM
	2991700	BOWMOUNT FW ASSEMBLY, STD.	81	2261730	WASHER-NYLON A/T
35	2264347	LOWER ARM, FW, LONG	82	2996246	BEARING RACE/ PINION ASSEMBLY
	2264342	LOWER ARM, FW, STD.	84	2263410	SCREW-8-32 X 5/16 ZN PL [2.EA]
36	2266002	NYLINER 3/8" SHAFT [4 EA.]	85	2994496	FOOT PEDAL/PLUG ASSEMBLY AT
37	2260503	PIVOT PIN [3 EA.]	86	2283700	PUSH-BUTTON FOOT PEDAL W/MAGNET
40	2150400	PULL-GRIP	87	2302732	SPRING-LOWER PEDAL SS
41	2151700	WASHER-EYE SHAFT .562 OD	88	2264040	SWITCH MOMENTARY
■	2993812	LATCH STRAP ASSEMBLY, LONG, 52"	90	2262114	SCREW-MOUNTING/SWITCH [2.EA]
	2993811	LATCH STRAP ASSEMBLY, STD, 45"	91	2233100	NUT-SWITCH MOUNT [2.EA]
42	2263607	LATCH STRAP, LONG, 50"	92	2264026	SWITCH-S SPEED
	2263605	LATCH STRAP, STD, 45"	93	2261701	LOCKWASHER-STAR
43	2261902	BRACKET-LATCH [2 EA.]	94	2263105	NUT-HEX
44	2268602	RIVET 1/8" SS [4 EA.]	95	2261715	SPACER-SWITCH 5 SP MODELS
45	2262709	SPRING-LATCH PIN	96	2280110	KNOB-SPEED CONTROL 5SPD
46	2260501	LATCH PIN [2 EA.]	97	2263000	E-RING TRU-ARC
47	2261544	YOKE-TUBE	98	2260730	CONNECTOR 1/4 MALE TAB
48	2264267	ARM-UPPER, FW, LONG, 52"	99	2332103	SCREW-6-20 X 3/8
	2264262	ARM-UPPER, FW, STD, 45"	100	2266413	TENSION SCREW PLATE FT PEDL
49	2263510	BOLT-SHOULDER, SS [2 EA.]	103	2260511	PIN-PIVOT A/T FT PDL
50	2251601	ROPE- 44.5" (45" MODEL)	104	2992104	FT PEDAL BASE/PIN ASSEMBLY SONAR
	2251603	ROPE-48" (52" MODEL)			

105	2262301	PULLEY- FOOT PEDAL
106	2266401	COVER-PULLEY STAMPING
107	2223430	SCREW-#8X 3/4 PPH TYPE 25 SS [4.EA]
108	2254031	SWITCH-MOM/OFF/COM
109	2266412	SWITCH PLATE, FT PEDAL
110	2332103	SCREW-6-20 X 3/8 THD [2.EA]
113	2261208	WIRE HARNESS, A/T FT. PED
114	2267505	CABLE ASSEMBLY-RIGHT 5'
115	2267515	CABLE ASSEMBLY-LEFT 5'
116	2265430	CABLE JACKET 5'
117	2265110	BOOT-CONTROL BOX
118	2265115	BOOT-FOOT PEDAL BASE
119	2372100	SCREW-8-18 X 5/8 THD [2.EA]
120	2261714	WASHER-MAXXUM FT PDL [2.EA]
121	2261901	BRACKET-CONDUIT AT/MAX
122	2223430	SCREW-8-18 X 3/4" [4.EA]
123	2263210	BRACKET- CONDUIT ADJUSTMENT
124	2263104	NYLOCK KEEPER
125	2263466	SCREW-1/4-20 X 2 STL PPH
126	2261235	LEADWIRE-BATTERY
127	2020700	TERMINAL RING, 3/8" [2.EA]
128	2256300	TIE WRAP-5.5" BLACK
129	2263201	CLAMP WIRE HARNESS MICRO [3 EA.]
130	2332103	SCREW-6-20 X 3/8 THD
131	2260301	CONNECTING WIRE -SWITCH
132	2260312	WIRE,BLK W/WHT- 19 1/2
133	2260322	WIRE,BLK W/BLUE -12"
134	2263205	LEADWIRE CLAMP
135	9953104	SCREW-8 X 1/2" SS
137	2262535	CONTROL BOX-PLASTIC
139	2267800	GEAR-INDICATOR [2.EA]
140	2262220	INDICATOR-DRIVE
141	2261905	BRACKET/INDICATOR
142	2372100	SCREW-8-18 X 5/8 (SS)
■	2994838	BAG ASSEMBLY
*143	2263462	SCREW 1/4-20X2 SS [6.EA]
*144	2261713	WASHER-1/4 FLAT 18-18 [6.EA]
*145	2263103	NUT- 1/4-20 NYLOC-JAM [6.EA]
147	2262310	GUIDE ROPE
148	2030316	WIRE EXT. 10 GA. 18" BLACK
149	2030317	WIRE EXT. 10 GA. 18" RED
150	2030312	WIRE EXT. 16 GA. 18" WHITE
151	2030313	WIRE EXT. 16 GA. 18" YELLOW
152	2375400	SHRINK TUBING 1/4" X 1" [4 EA.]
153	2030710	BUTT CONNECTOR LARGE [2 EA.]
154	2030711	BUTT CONNECTOR SMALL [2 EA.]

For Parts and Service
Call 1-888-404-1119
www.mikesreelrepair.com

2888460 Seal & Oring Kit

Edge 45 is 12-volt only!

