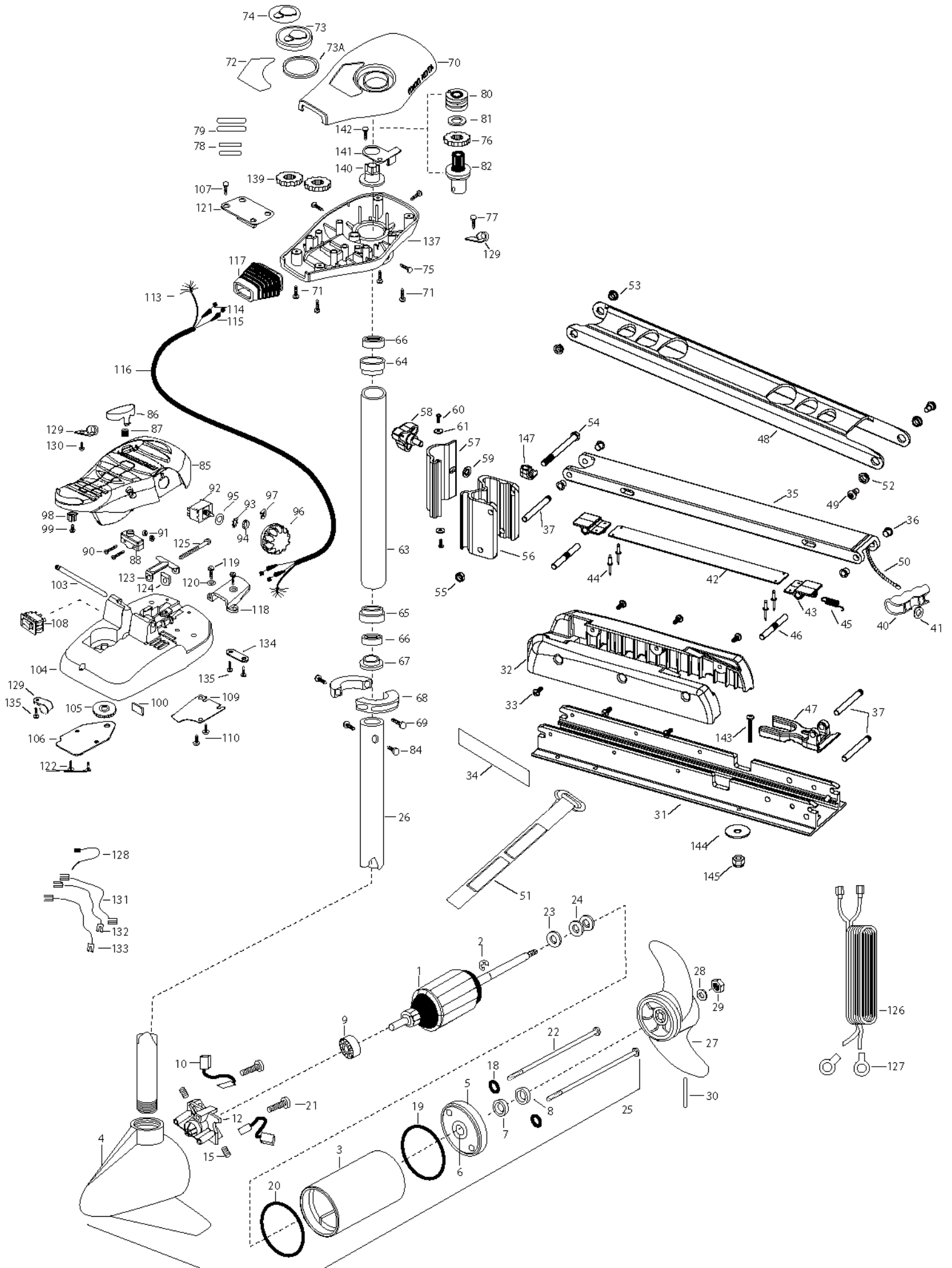


EDGE 70
70 LBS THRUST
24 VOLT 42 AMPS
45"/52" SHAFT

for use with "AI" serial numbers
2-year warranty from the date of purchase

For Parts and Service
Call 1-888-404-1119
www.mikesreelrepair.com



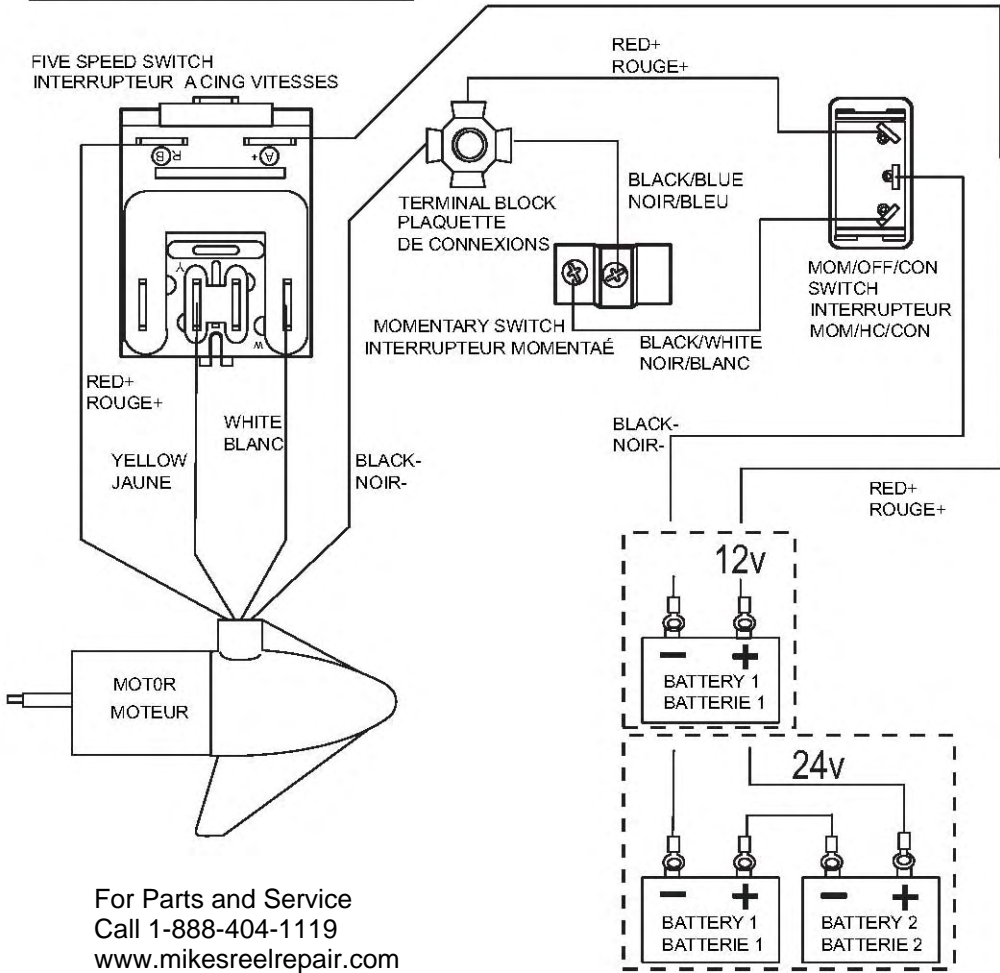
1	2-100-119	ARM ASSEMBLY 24V 3.625	49	2251601	ROPE- 44.5" (45" MODEL)
2	788-015	RETAINING RING	50	2251603	ROPE-48" (52" MODEL)
3	2-200-005	HOUSING ASSEMBLY CENTER 3.625 TXT	51	2263805	VELCRO STRAP
45 " 4	2-300-042	HOUSING-ASSEMBLY BRUSH END 3.625 SP.CO	52	2267302	BUSHING-LOWER 7/16" ID, SS
	2-300-139	HOUSING-ASSEMBLY BRUSH END 3.625 SP.CO	53	2267303	BUSHING-UPPER 3/8" ID, SS
52 " 5	2-400-101	PLAIN END HOUSING ASSEMBLY	54	2263505	BOLT 3/8-16 X 4.25"
6	144-049	BEARING- FLANGE [SERVICE ONLY]	55	2263114	NUT-NYLOCK JAM 3/8-16
7	880-003	SEAL	56	2261872	HINGE BASE, FW
8	880-006	SEAL WITH SHIELD	57	2261877	HINGE DOOR, FW
9	140-010	BEARING -BALL	58	2260905	HANDLE-SOFT GRIP, L&D
10	188-037	BRUSH ASSEMBLY [2.EA]	59	2261728	WASHER-RETAINING 3/8"
12	738-036	BRUSH PLATE W/HOLDER 3.625	60	2053415	SCREW #8-32 X 3/8" TRI [2 EA.]
15	975-040	SPRING- TORSION [2.EA]	61	2261732	WASHER #8, NYLON [2 EA.]
18	701-008	O-RING [2. EA]	■	2992012	TUBE W/BEARING RACE ASSEMBLY 21"
19	337-036	GASKET		2992016	TUBE W/BEARING RACE ASSEMBLY 24"
20	701-081	O-RING	63	2272069	TUBE OUTER-21" 4 HOLES
21	830-007	SCREW- SELF-THREAD 8-32X1.7 [2.EA]		2272067	TUBE OUTER -24" 4 HOLES
22	830-008	THRU BOLT 10-32 X 9.205 [2.EA]	64	2266260	BEARING RACE
23	990-067	WASHER- STEEL THRUST	65	2266220	BEARING RACE-STEEL
24	990-070	WASHER- NYLATRON [2.EA]	66	2266000	BEARING BALL-STEEL [2.EA]
25	2096035	MTR ASSEMBLY 24V 3.625 5SPD 45"	67	2266115	BEARING CONE
	2096039	MTR ASSEMBLY 24V 3.625 5SPD 52"	68	2261622	COLLAR HALF-ALUMINUM- [2.EA]
26	2032061	TUBE (COMP)W/CSK HOLE 45"	69	2263453	SCREW-1/4X20 X 1" SHCS SS [2. A]
	2032067	TUBE (COMP)W/CSK HOLE 52"	70	2260286	COVER-CTR BOX EDGE/FC BLK
	1378131	PROPELLER KIT	71	2372100	SCREW-8-18 X 5/8 THD [4.EA]
■	2091160	PROPELLER W/WEDGE 2	72	2265674	DECAL-COVER EDGE 70/FC
27	2151726	WASHER- 5/16 SS	73	2260150	POINTER DISC TRNSLCNT RED
28	2053101	NUT-PROP NYLOC	73A	2261733	WASHER-FOAM, INDICATOR
29	2092600	PIN-DRIVE SS	74	2265800	DECAL-INDICATOR
30	2266507	BOWPLATE, FW, LONG, 52"	75	2053414	SCREW-8-32 X 1/2 TRI LOBE [3. EA]
31	2266502	BOWPLATE, FW, STD, 45"	76	2267800	GEAR-INDICATOR
	2263905	MOTOR REST, BLK.	77	2372100	SCREW-8-18 X 5/8 SS
32	2303430	SCREW 1/4-20 X 5/8 [6 EA.]	78	2375400	SHRINK TUBE-1/4OD X 1-3/4 [2. EA]
33	2265667	MOTOR REST DECAL, FW [2 EA.]	79	2355410	SHRINK TUBE-3/8 OD X 2 [2. EA]
34	2991704	BOWMOUNT FW ASSEMBLY, STD	80	2232360	PULLEY-CABLE DRUM
■	2991706	BOWMOUNT FW ASSEMBLY, LONG	81	2261730	WASHER-NYLON A/T
	2264346	LOWER ARM, FW, LONG	82	2996246	BEARING RACE/ PINION ASSEMBLY
35	2264341	LOWER ARM, FW, STD.	84	2263410	SCREW-8-32 X 5/16 ZN PL [2.EA]
	2266002	NYLINER 3/8" SHAFT [4 EA.]	85	2994496	FOOT PEDAL/PLUG ASSEMBLY AT
36	2260503	PIVOT PIN [3 EA.]	86	2283700	PUSH-BUTTON FOOT PEDAL W/MAGNET
37	2150400	PULL-GRIP	87	2302732	SPRING-LOWER PEDAL SS
40	2151700	WASHER-EYE SHAFT .562 OD	88	2264040	SWITCH MOMENTARY
41	2993812	LATCH STRAP ASSEMBLY, LONG, 52"	90	2262114	SCREW-MOUNTING/SWITCH [2.EA]
■	2993811	LATCH STRAP ASSEMBLY, STD, 45"	91	2233100	NUT-SWITCH MOUNT [2.EA]
	2263607	LATCH STRAP, LONG, 50"	92	2264026	SWITCH-S SPEED
42	2263605	LATCH STRAP, STD, 45"	93	2261701	LOCKWASHER-STAR
	2261902	BRACKET-LATCH [2 EA.]	94	2263105	NUT-HEX
43	2268602	RIVET 1/8" SS [4 EA.]	95	2261715	SPACER-SWITCH 5 SP MODELS
44	2262709	SPRING-LATCH PIN	96	2280110	KNOB-SPEED CONTROL 5SPD
45	2260501	LATCH PIN [2 EA.]	97	2263000	E-RING TRU-ARC
46	2261544	YOKE-TUBE	98	2260730	CONNECTOR 1/4 MALE TAB
47	2264267	ARM-UPPER, FW, LONG, 52"	99	2332103	SCREW-6-20 X 3/8
48	2264262	ARM-UPPER, FW, STD, 45"	100	2266413	TENSION SCREW PLATE FT PEDL
	2263510	BOLT-SHOULDER, SS [2 EA.]			

103	2260511	PIN-PIVOT A/T FT PDL
104	2992104	FT PEDAL BASE/PIN ASSEMBLY SONAR
105	2262301	PULLEY- FOOT PEDAL
106	2266401	COVER-PULLEY STAMPING
107	2223430	SCREW-#8X 3/4 PPH TYPE 25 SS [4.EA]
108	2254031	SWITCH-MOM/OFF/COM
109	2266412	SWITCH PLATE, FT PEDAL
110	2332103	SCREW-6-20 X 3/8 THD [2.EA]
113	2261208	WIRE HARNESS, A/T FT. PED
114	2267505	CABLE ASSEMBLY-RIGHT 5'
115	2267515	CABLE ASSEMBLY-LEFT 5'
116	2265430	CABLE JACKET 5'
117	2265110	BOOT-CONTROL BOX
118	2265115	BOOT-FOOT PEDAL BASE
119	2372100	SCREW-8-18 X 5/8 THD [2.EA]
120	2261714	WASHER-MAXXUM FT PDL [2.EA]
121	2261901	BRACKET-CONDUIT AT/MAX
122	2223430	SCREW-8-18 X 3/4" [4.EA]
123	2263210	BRACKET- CONDUIT ADJUSTMENT
124	2263104	NYLOCK KEEPER
125	2263466	SCREW-1/4-20 X 2 STL PPH
126	2261235	LEADWIRE-BATTERY
127	2020700	TERMINAL RING, 3/8" [2.EA]
128	2256300	TIE WRAP-5.5" BLACK
129	2263201	CLAMP WIRE HARNESS MICRO [3 EA.]
130	2332103	SCREW-6-20 X 3/8 THD
131	2260301	CONNECTING WIRE -SWITCH
132	2260312	WIRE,BLK W/WHT- 19 1/2
133	2260322	WIRE,BLK W/BLUE -12"
134	2263205	LEADWIRE CLAMP
135	9953104	SCREW-8 X 1/2" SS
137	2262535	CONTROL BOX-PLASTIC
139	2267800	GEAR-INDICATOR [2.EA]
140	2262220	INDICATOR-DRIVE
141	2261905	BRACKET/INDICATOR
142	2372100	SCREW-8-18 X 5/8 (SS)
■	2994838	BAG ASSEMBLY
*143	2263462	SCREW 1/4-20X2 SS [6.EA]
*144	2261713	WASHER-1/4 FLAT 18-18 [6.EA]
*145	2263103	NUT- 1/4-20 NYLOC-JAM [6.EA]
147	2262310	GUIDE ROPE

For Parts and Service
Call 1-888-404-1119
www.mikesreelrepair.com

2888460 seal & oring kit

Edge 70 is 24-volts only!!!



For Parts and Service
 Call 1-888-404-1119
www.mikesreelrepair.com