

Thank You

Thank you for choosing Humminbird®, America's #1 name in fishfinders. Humminbird® has built its reputation by manufacturing top-quality, thoroughly reliable marine equipment. Genuine Humminbird® accessories offer the opportunity to upgrade and expand the capabilities of your Humminbird® product.

About Thru-Hull Installation

Following are instructions for the installation of the Plastic Thru-Hull Transducer. We encourage you to read these instructions thoroughly to fully benefit from your Humminbird® accessory.

NOTE: This accessory requires drilling a hole in the hull of the boat; therefore, installation should be performed by a qualified marine technician.

Prior to installation, test the transducer to ensure that no damage occurred during shipping. After connecting the transducer to the fishfinder, hold the transducer in the water over the side of the boat to confirm proper operation. Next, determine the best mounting location for the transducer. Viewing the boat from the outside, the best location will be aft midship, as close to the centerline of the boat as possible. The transducer should be mounted forward of the propellers on inboard boats, and separated adequately from other transducers, strakes, rivet lines or other protrusions. Inside the boat, there must be room to access the mounting location for installation, and cable routing. Additionally, ensure the inside surface of the hull provides a smooth surface for the fairing block to seat on.

NOTE: This type of transducer installation is not recommended for trailerable boats.

Additionally, if the selected mounting location has a hull deadrise angle of 8° or greater, the fairing block included with your transducer should be shaped to match the angle of deadrise, in order to level the transducer housing and direct the sonar signal straight down.

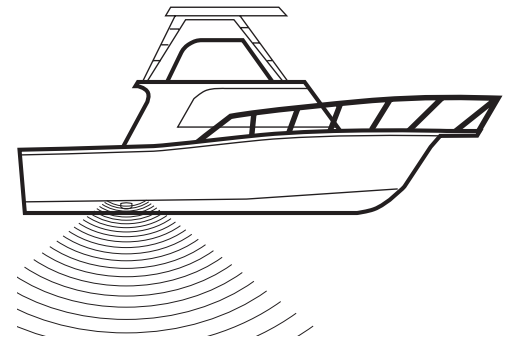
Before You Start

If you find that any items are missing from your installation kit, call the Humminbird® Customer Resource Center at 1-800-633-1468.

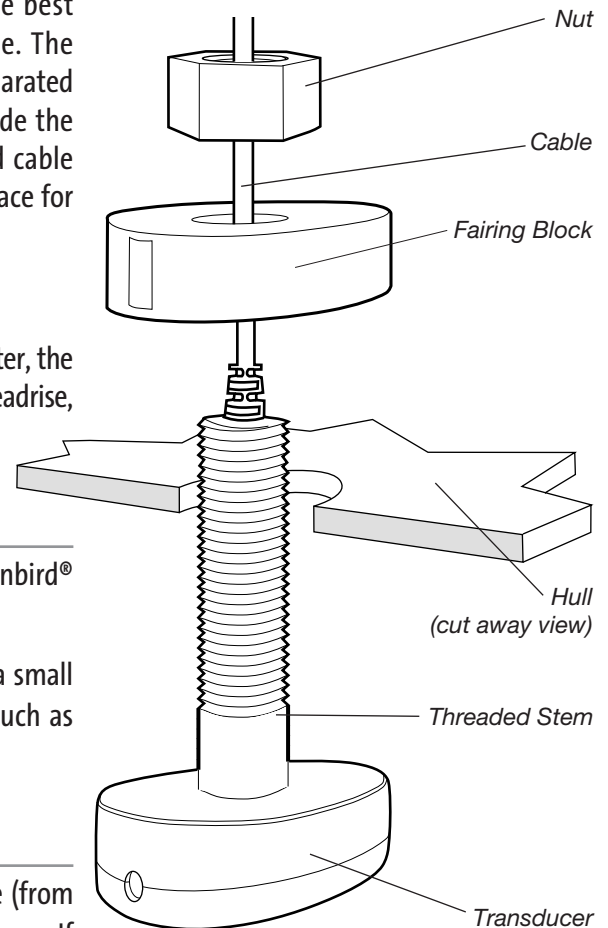
In addition to the hardware supplied with your transducer, you will need a drill, a small drill bit for a pilot hole, a 1½" (29mm) hole saw, and marine adhesive sealant such as Sikaflex® 291 or 3M™ Marine Adhesive Sealant 5200.

Attaching the Transducer

Select a location for the transducer and drill a small pilot hole. Use the pilot hole (from the outside of the hull) to drill a 1½" hole to fit the threaded stem of the transducer. If you are using the fairing block to level the transducer on a steep angled hull, drill the hole perpendicular to the water line. If you are mounting the transducer body directly to the hull, drill the hole perpendicular to the hull. Thoroughly clean and remove burrs from the drilled hole and clean the outside of the hull.



Thru-Hull Installation



Plastic Thru-Hull Transducer

If the hull angle is greater than 8°, the fairing block should be used to level the transducer. Cut the block to match the angle of deadrise. The fairing block included with your transducer can accommodate a maximum deadrise angle of 25°. Use only the fairing block included with this transducer. Do not use a wood fairing since swelling of the wood may cause the plastic to fracture. **Replacement fairing blocks are available by calling the Humminbird® Customer Resource Center, at 1-800-633-1468.** The fairing block needs to be cut in two equal pieces: one which mounts outside the hull, and one which mounts inside the hull. The thinnest wall of the outside fairing block must be 1/8" (3mm). The installation of a fairing block varies greatly with different hull shapes; therefore, it should be customized by a qualified marine technician.

Ensure that the narrow, or thin, end of the transducer is pointing forward. This type of transducer is directional in nature and must be aligned with the direction of travel, parallel to the center line. Failure to align the transducer properly will result in poor bottom readings and incorrect fish locations.

Feed the cable through the hole, then temporarily install the transducer to check the fit. Next, apply a generous amount of marine adhesive sealant inside the drilled hole and along all mating surfaces of the transducer housing, hull and fairing blocks.

Insert the transducer into the drilled hole from outside the boat, then install the nut onto the threaded stem from inside the boat. **Hand tighten the nut only until assembly is firmly seated. Then tighten no more than 1/8 of a turn extra.** Remove the excess adhesive sealant from the outside of the hull to ensure smooth water flow over the transducer.

Route the Cable to Your Fishfinder

NOTE: Route and secure the cable, avoiding areas where it may be damaged or interfere with normal and safe boating operations.

Insert the transducer cables into the appropriate terminal slots on the unit. The slots are keyed to prevent reversed installation, so be careful not to force the connector into the holder.

Refer to your owner's manual and/or control head installation sheet for the correct procedure for routing cables and cable connections.

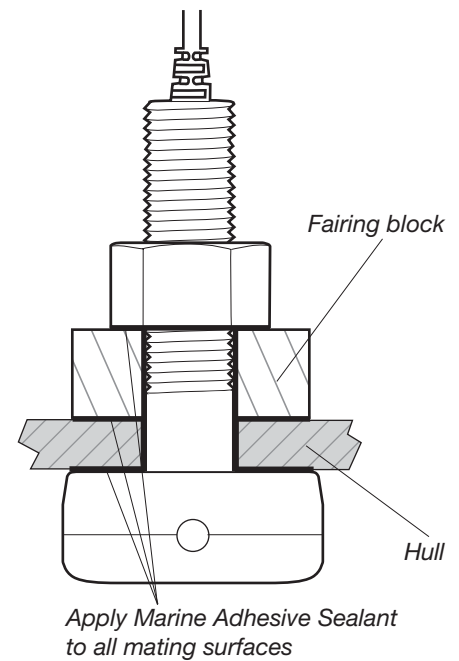
Your fishfinder is now ready for operation.

Your Humminbird® accessory is designed for trouble-free operation and is backed by the same one-year warranty as our fishfinders, VHF Marine-band radios and GPS Navigation equipment. Refer to your Humminbird® product Operations Manual for the specific details of this warranty. If you have any questions, call our Humminbird® Customer Resource Center at 1-800-633-1468.

Throughout the U.S. and Canada, hours are Monday-Friday, 8:05 a.m. to 4:30 p.m. Central Standard Time.

Humminbird
678 Humminbird Lane
Eufaula, AL 36027

STANDARD INSTALLATION



INSTALLATION FOR DEADRISE ANGLE GREATER THAN 8°, USING FAIRING BLOCKS TO LEVEL TRANSDUCER

