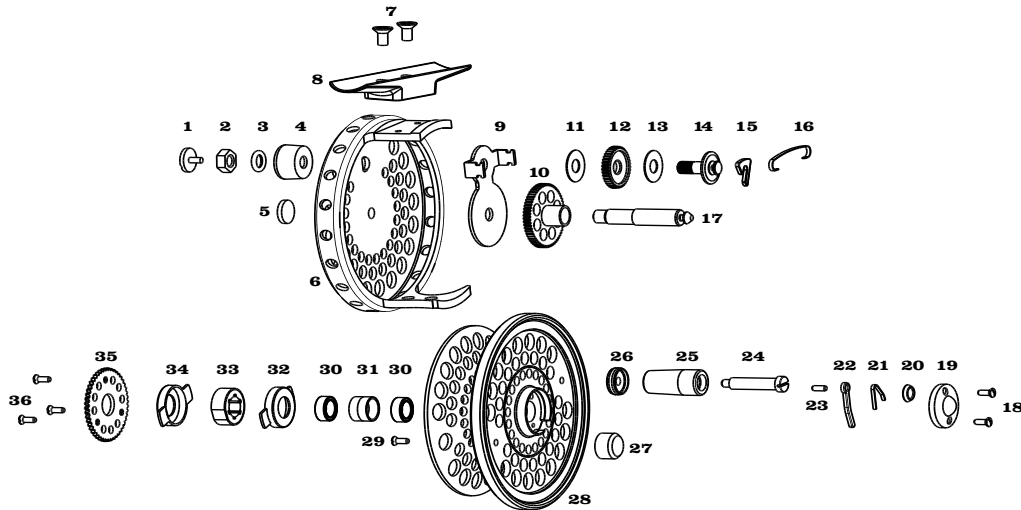


# ORVIS®

## ROD AND TACKLE

### CFO Disc Drag Fly Reel



#### REEL ASSEMBLY

- |               |                      |                         |                              |
|---------------|----------------------|-------------------------|------------------------------|
| 1 Drag Screw  | 7 Reel Foot Screws   | 13 Rulon Drag Washer    | 19 Spool Release Cap         |
| 2 Drag Nut    | 8 Reel Foot          | 14 Drag Gear Cap        | 20 Spool Release Washer      |
| 3 Drag Washer | 9 Clicker Retainer   | 15 Clicker Pawl         | 21 Spool Release Clip        |
| 4 Drag Knob   | 10 Clutch Gear       | 16 Clicker Spring       | 22 Spool Release Spring      |
| 5 Spindle Cap | 11 Rulon Drag Washer | 17 Spindle              | 23 Spool Release Pin         |
| 6 Reel Body   | 12 Drag Gear         | 18 Spool Release Screws | 24 Handle Knob Spindle Screw |

#### CFO DISC DRAG FLY REELS Capacity Chart

LINE WEIGHT	I	II	III
WF1	75		
WF2	50		
WF3	25	75	
WF4		50	
WF5		25	75
WF6			50
WF7			25

#### CFO Reel Specifications

- I Reel | weight: 3.6 oz. | 2¾ inches      III Reel | weight: 4.2 oz. | 3 inches  
 II Reel | weight: 3.9 oz. | 2½ inches

#### Capacity in Yards

Stated capacities are based on Orvis 20-lb Dacron® backing and a 90-ft weight forward floating fly line. If a double taper fly line is desired, deduct 50 yards from stated capacities.

# ORVIS®

## ROD AND TACKLE

### CFO Disc Drag Fly Reel

#### INTRODUCTION

Updating a classic, the CFO tastefully blends modern performance-enhancing design and technology under a traditional-looking skin.

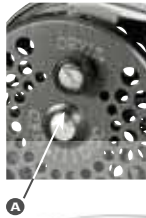
Features include:

- Two internal radial stainless steel reel bearings.
- Line guard is machined into the reel cage.
- Modified machined design is lighter.
- Impregnated wood handle.
- Brown/bronze anodized matte finish.
- Disc drag.

#### DRAG OPERATION

Orvis CFO Disc Reels feature an adjustable disc drag system. The pressure exerted on the disc determines the drag pressure and may be adjusted by turning the drag adjustment knob located on the back of the reel frame.

To increase the drag, turn the drag adjustment knob (A) clockwise. To decrease it, turn the knob counterclockwise. Sufficient drag pressure must always be applied when fighting a fish to prevent line overrun. Additional drag may be applied by palming the spool rim with your fingertips or palm.



#### SPOOL REMOVAL

The spool release latch is located in the middle of the reel spool. To remove the spool, depress the spool release latch (B) while lifting the spool out of the reel frame.

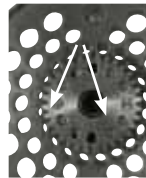
#### RETRIEVAL CONVERSION

Your new CFO Reel has the drag pawl factory-installed for left-hand wind.

To change your CFO Reel to right-hand wind, depress the spool latch release and remove the spool. On the backside of the spool, you will see a spool gear that has screws fastening it to the spool.



1. Remove the screws and then remove the spool gear from the spool.
2. Find the clutch bearing. It will either be inside the spool gear or still on the spool.
  - If the bearing stays with the gear upon removal, use a small screwdriver to push the bearing out.
  - If the bearing was in the spool upon removal of the spool gear, use a pair of pliers to remove it from the spool.
3. Remove the bearing, flip it over, and replace it in the spool gear.
4. Replace spool gear with the three clutch screws.
5. After you have reassembled the spool gear, remove the click pawl, flip it over, and replace it on the reel frame to complete the conversion.



#### ROUTINE MAINTENANCE

While your new CFO reel has been properly lubricated prior to purchase, it should be cleaned and lubricated after extensive use or after contact with dirt, sand, or salt water. Your reel should also be cleaned and lubricated twice each year.

To clean your reel, we recommend using a soft cloth and a small brush. Wipe off old grease and oil from the inside of the frame and the center shaft. Then clean sand and grit from around the disc drag system.

Use a good grade medium oil to lubricate the center shaft and the bearing located in the back of the spool. After lubrication, check screws for proper tightness.

#### GUARANTEE

Your Orvis CFO reel is unconditionally guaranteed against defects in materials and workmanship.

If you have any problems, simply send your reel and a \$10 check to the following address:

**By USPS Mail:** Orvis; Overhaul Services; 178 Conservation Way; Sunderland, VT 05250.

**By FedEx or UPS:** Orvis; Overhaul Services; 4182 Main St.; Manchester, VT 05254.

If the reel is in any way defective in materials or workmanship, your \$10 repair check will be returned to you at once.

Your reel will be completely serviced (cleaned, lubricated, and returned to you postpaid) for a fee of \$10, plus cost of parts.

Damaged reels can be repaired on an individual basis and repair work will be billed at the hourly shop rate, plus parts. We will provide a written estimate upon receipt of the reel prior to any work being done.

#### QUESTIONS?

If you have any questions about the operation and maintenance of your new reel, Orvis Technical Advisors are always available.

Email: [info@orvis.com](mailto:info@orvis.com). Phone: 1-800-778-4778.